



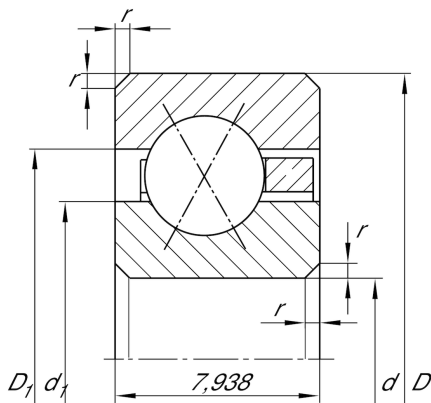
CSXB060

Four-point contact bearing

Schaeffler ID:
0097055700000

Four point contact bearing, Thin section bearing CSXB, brass sheet metal cage

Technical information



Main Dimensions & Performance Data

d	152,4 mm	Bore diameter
D	168,275 mm	Outside diameter
B	7,938 mm	Width
C_r	9.300 N	Basic dynamic load rating, radial
C_{0r}	17.900 N	Basic static load rating, radial
n_G	2.030 1/min	Limiting speed
$\approx m$	200 g	Weight

Dimensions

r_{\min}	1 mm	Minimum chamfer dimension
d_1	158,3 mm	Shoulder diameter inner ring
D_1	162,4 mm	Shoulder diameter outer ring
α	30 °	Contact angle

Temperature range

T_{\min}	-30 °C	Operating temperature min.
T_{\max}	120 °C	Operating temperature max.