



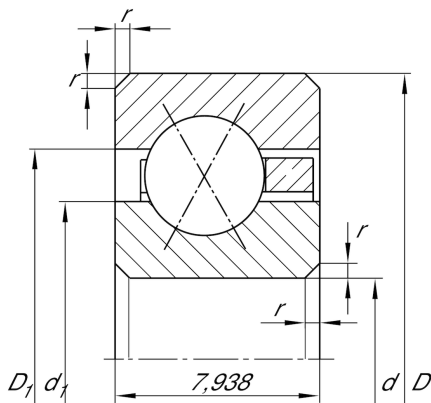
CSXB045

Four-point contact bearing

Schaeffler ID:
0036190440000

Four point contact bearing, Thin section bearing CSXB, brass sheet metal cage

Technical information



Main Dimensions & Performance Data

d	114,3 mm	Bore diameter
D	130,175 mm	Outside diameter
B	7,938 mm	Width
C_r	8.400 N	Basic dynamic load rating, radial
C_{0r}	13.500 N	Basic static load rating, radial
n_G	2.800 1/min	Limiting speed
$\approx m$	150 g	Weight

Dimensions

r_{\min}	1 mm	Minimum chamfer dimension
d_1	120,2 mm	Shoulder diameter inner ring
D_1	124,3 mm	Shoulder diameter outer ring
α	30 °	Contact angle

Temperature range

T_{\min}	-30 °C	Operating temperature min.
T_{\max}	120 °C	Operating temperature max.