



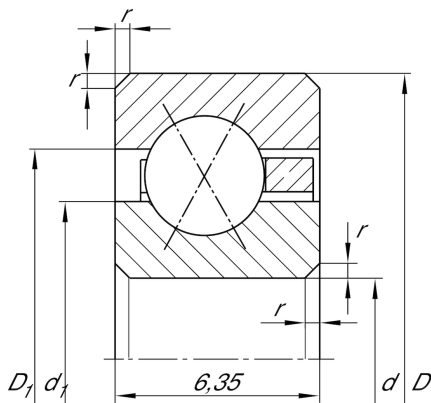
CSXA025

Four-point contact bearing

Schaeffler ID:
0038018290000

Four point contact bearing, Thin section bearing CSXA, brass sheet metal cage

Technical information



Main Dimensions & Performance Data

d	63,5 mm	Bore diameter
D	76,2 mm	Outside diameter
B	6,35 mm	Width
C _r	4.750 N	Basic dynamic load rating, radial
C _{0r}	5.700 N	Basic static load rating, radial
n _G	5.600 1/min	Limiting speed
≈m	60 g	Weight

Dimensions

r _{min}	0,6 mm	Minimum chamfer dimension
d ₁	68,2 mm	Shoulder diameter inner ring
D ₁	71,5 mm	Shoulder diameter outer ring
α	30 °	Contact angle

Temperature range

T _{min}	-30 °C	Operating temperature min.
T _{max}	120 °C	Operating temperature max.