



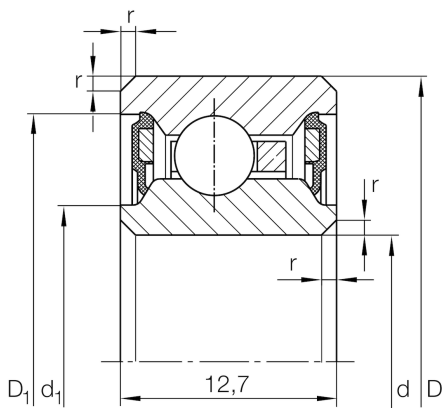
CSCU075-2RS

Deep groove ball bearing

Schaeffler ID:
0027425430000

Deep groove ball bearing, Thin section bearing CSCU..-2RS, seals, brass sheet metal cage

Technical information



Main Dimensions & Performance Data

d	190,5 mm	Bore diameter
D	209,55 mm	Outside diameter
B	12,7 mm	Width
C _r	9.800 N	Basic dynamic load rating, radial
C _{0r}	15.200 N	Basic static load rating, radial
n _G	1.370 1/min	Limiting speed
≈m	450 g	Weight

Dimensions

r _{min}	0,38 mm	Minimum chamfer dimension
d ₁	194,3 mm	Caliber diameter inner ring
D ₁	204,1 mm	Caliber diameter outer ring

Temperature range

T _{min}	-25 °C	Operating temperature min.
T _{max}	120 °C	Operating temperature max.