



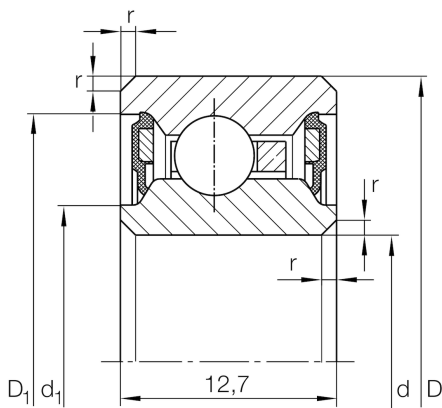
CSCU045-2RS

Deep groove ball bearing

Schaeffler ID:
0093554560000

Deep groove ball bearing, Thin section bearing CSCU..-2RS, seals, brass sheet metal cage

Technical information



Main Dimensions & Performance Data

d	114,3 mm	Bore diameter
D	133,35 mm	Outside diameter
B	12,7 mm	Width
C _r	8.200 N	Basic dynamic load rating, radial
C _{0r}	9.200 N	Basic static load rating, radial
n _G	2.250 1/min	Limiting speed
≈m	280 g	Weight

Dimensions

r _{min}	0,38 mm	Minimum chamfer dimension
d ₁	118,1 mm	Caliber diameter inner ring
D ₁	128,2 mm	Caliber diameter outer ring

Temperature range

T _{min}	-25 °C	Operating temperature min.
T _{max}	120 °C	Operating temperature max.