



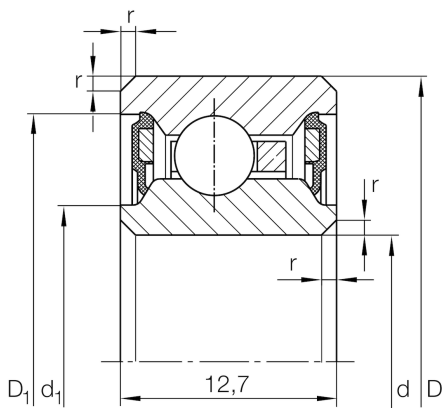
## CSCU040-2RS

Deep groove ball bearing

Schaeffler ID:  
0096604370000

Deep groove ball bearing, Thin section bearing CSCU..-2RS, seals, brass sheet metal cage

### Technical information



#### Main Dimensions & Performance Data

d	101,6 mm	Bore diameter
D	120,65 mm	Outside diameter
B	12,7 mm	Width
C <sub>r</sub>	7.800 N	Basic dynamic load rating, radial
C <sub>0r</sub>	8.200 N	Basic static load rating, radial
n <sub>G</sub>	2.500 1/min	Limiting speed
≈m	250 g	Weight

#### Dimensions

r <sub>min</sub>	0,38 mm	Minimum chamfer dimension
d <sub>1</sub>	105,4 mm	Caliber diameter inner ring
D <sub>1</sub>	115,1 mm	Caliber diameter outer ring

#### Temperature range

T <sub>min</sub>	-25 °C	Operating temperature min.
T <sub>max</sub>	120 °C	Operating temperature max.