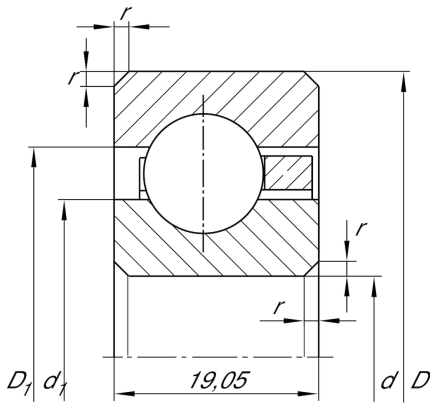


**CSCF070** [↗](#)

Deep groove ball bearing

Deep groove ball bearing, Thin section bearing CSCF, brass sheet metal cage

Technical information

**Main Dimensions & Performance Data**

d	177,8 mm	Bore diameter
D	215,9 mm	Outside diameter
B	19,05 mm	Width
C _r	28.500 N	Basic dynamic load rating, radial
C _{0r}	34.000 N	Basic static load rating, radial
n _G	2.750 1/min	Limiting speed
≈m	1,45 kg	Weight

Dimensions

r _{min}	2 mm	Minimum chamfer dimension
d ₁	191,9 mm	Shoulder diameter inner ring
D ₁	201,8 mm	Shoulder diameter outer ring

Temperature range

T _{min}	-30 °C	Operating temperature min.
T _{max}	120 °C	Operating temperature max.