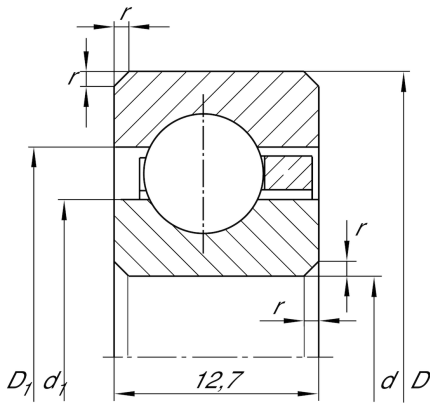


**CSCD055**

Deep groove ball bearing

Deep groove ball bearing, Thin section bearing CSCD, brass sheet metal cage

Technical information

**Main Dimensions & Performance Data**

d	139,7 mm	Bore diameter
D	165,1 mm	Outside diameter
B	12,7 mm	Width
C _r	13.800 N	Basic dynamic load rating, radial
C _{0r}	16.200 N	Basic static load rating, radial
n _G	3.650 1/min	Limiting speed
≈m	480 g	Weight

Dimensions

r _{min}	1,5 mm	Minimum chamfer dimension
d ₁	149,1 mm	Shoulder diameter inner ring
D ₁	155,7 mm	Shoulder diameter outer ring

Temperature range

T _{min}	-30 °C	Operating temperature min.
T _{max}	120 °C	Operating temperature max.