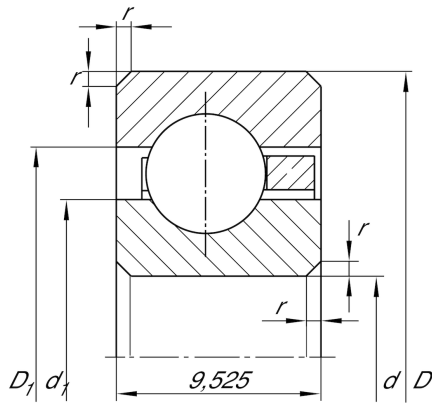


**CSCC065**

Deep groove ball bearing

Deep groove ball bearing, Thin section bearing CSCC, brass sheet metal cage

Technical information

**Main Dimensions & Performance Data**

d	165,1 mm	Bore diameter
D	184,15 mm	Outside diameter
B	9,525 mm	Width
C _r	9.300 N	Basic dynamic load rating, radial
C _{0r}	13.200 N	Basic static load rating, radial
n _G	3.250 1/min	Limiting speed
≈m	310 g	Weight

Dimensions

r _{min}	1 mm	Minimum chamfer dimension
d ₁	172,1 mm	Shoulder diameter inner ring
D ₁	177,1 mm	Shoulder diameter outer ring

Temperature range

T _{min}	-30 °C	Operating temperature min.
T _{max}	120 °C	Operating temperature max.