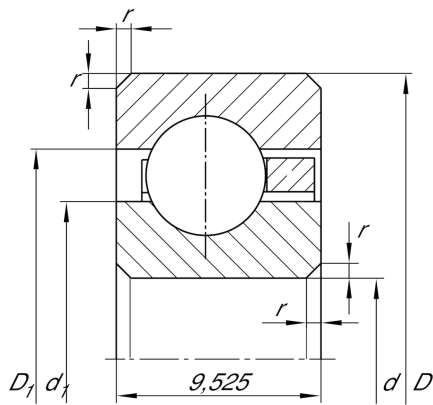


**CSCC047**

Deep groove ball bearing

Deep groove ball bearing, Thin section bearing CSCC, brass sheet metal cage

Technical information

**Main Dimensions & Performance Data**

d	120,65 mm	Bore diameter
D	139,7 mm	Outside diameter
B	9,525 mm	Width
C _r	8.300 N	Basic dynamic load rating, radial
C _{0r}	9.700 N	Basic static load rating, radial
n _G	4.350 1/min	Limiting speed
≈m	230 g	Weight

Dimensions

r _{min}	1 mm	Minimum chamfer dimension
d ₁	127,7 mm	Shoulder diameter inner ring
D ₁	132,7 mm	Shoulder diameter outer ring

Temperature range

T _{min}	-30 °C	Operating temperature min.
T _{max}	120 °C	Operating temperature max.