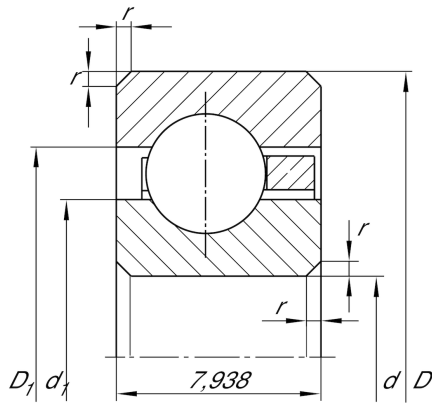


**CSCB025**

Deep groove ball bearing

Deep groove ball bearing, Thin section bearing CSCB, brass sheet metal cage

Technical information

**Main Dimensions & Performance Data**

d	63,5 mm	Bore diameter
D	79,375 mm	Outside diameter
B	7,938 mm	Width
C _r	5.100 N	Basic dynamic load rating, radial
C _{0r}	4.400 N	Basic static load rating, radial
n _G	8.100 1/min	Limiting speed
≈m	90 g	Weight

Dimensions

r _{min}	1 mm	Minimum chamfer dimension
d ₁	69,4 mm	Shoulder diameter inner ring
D ₁	73,5 mm	Shoulder diameter outer ring

Temperature range

T _{min}	-30 °C	Operating temperature min.
T _{max}	120 °C	Operating temperature max.