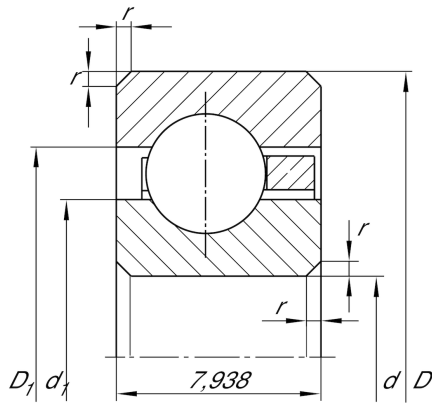


**CSCB020**

Deep groove ball bearing

Deep groove ball bearing, Thin section bearing CSCB, brass sheet metal cage

Technical information

**Main Dimensions & Performance Data**

d	50,8 mm	Bore diameter
D	66,675 mm	Outside diameter
B	7,938 mm	Width
C _r	4.750 N	Basic dynamic load rating, radial
C _{0r}	3.550 N	Basic static load rating, radial
n _G	9.900 1/min	Limiting speed
≈m	70 g	Weight

Dimensions

r _{min}	1 mm	Minimum chamfer dimension
d ₁	56,7 mm	Shoulder diameter inner ring
D ₁	60,8 mm	Shoulder diameter outer ring

Temperature range

T _{min}	-30 °C	Operating temperature min.
T _{max}	120 °C	Operating temperature max.