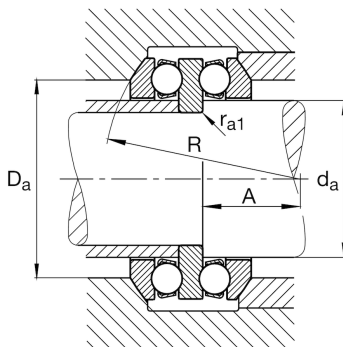
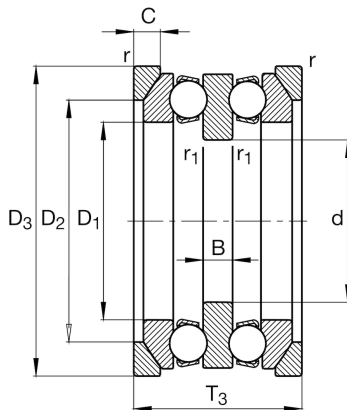
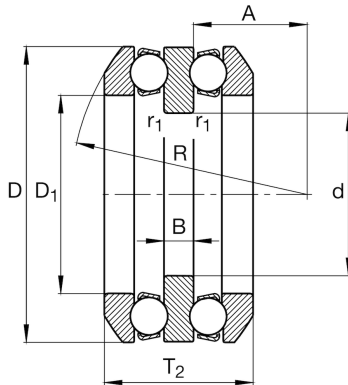
**FAG****54324-MP**

Axial deep groove ball bearing

Axial deep groove ball bearing 543..-MP, double direction, with spherical housing washer, solid brass cage

## Technical information

**Main Dimensions & Performance Data**

|                 |             |                                  |
|-----------------|-------------|----------------------------------|
| d               | 100 mm      | Inner diameter shaft washer      |
| D               | 210 mm      | Outer diameter housing washer    |
| T <sub>2</sub>  | 131,2 mm    | Height                           |
| C <sub>a</sub>  | 325.000 N   | Basic dynamic load rating, axial |
| C <sub>0a</sub> | 910.000 N   | Basic static load rating, axial  |
| C <sub>ua</sub> | 32.500 N    | Fatigue load limit, axial        |
| n <sub>G</sub>  | 1.610 1/min | Limiting speed                   |
| n <sub>gr</sub> | 3.100 1/min | Reference speed                  |
| ≈m              | 18,8 kg     | Weight                           |

**Mounting dimensions**

|                     |        |                                      |
|---------------------|--------|--------------------------------------|
| d <sub>a max</sub>  | 120 mm | Maximum diameter shaft shoulder      |
| D <sub>a max</sub>  | 165 mm | Maximum diameter of housing shoulder |
| r <sub>a max</sub>  | 2,1 mm | Maximum filled radius                |
| r <sub>a1 max</sub> | 1 mm   | Maximum filled radius                |

**Dimensions**

|                    |        |                                 |
|--------------------|--------|---------------------------------|
| D <sub>1</sub>     | 123 mm | Inner diameter housing washer   |
| B                  | 27 mm  | Height shaft washer             |
| r <sub>min</sub>   | 2,1 mm | Minimum chamfer dimension       |
| r <sub>1 min</sub> | 1,1 mm | Minimum chamfer dimension       |
| R                  | 160 mm | Radius spherical housing washer |
| A                  | 58 mm  | Distance of the center point    |
| T <sub>3</sub>     | 143 mm | Height with seat washer         |

**Temperature range**

|                  |        |                            |
|------------------|--------|----------------------------|
| T <sub>min</sub> | -30 °C | Operating temperature min. |
| T <sub>max</sub> | 150 °C | Operating temperature max. |

**Calculation factors**

|   |     |                     |
|---|-----|---------------------|
| A | 4,4 | Minimum load factor |
|---|-----|---------------------|



### Additional information

---

U324

Seat washer

