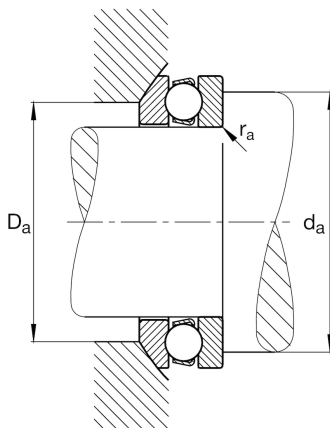
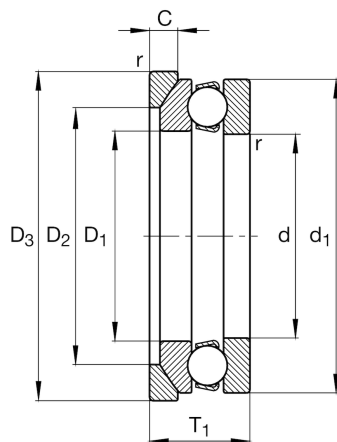
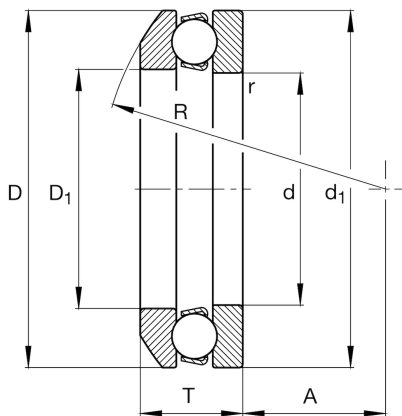
**FAG****53311**

Axial deep groove ball bearing

Axial deep groove ball bearing 533, single direction, with spherical housing washer, steel sheet metal cage

Technical information

Main Dimensions & Performance Data



d	55 mm	Inner diameter shaft washer
D	105 mm	Outer diameter housing washer
T	39,3 mm	Height
C_a	102.000 N	Basic dynamic load rating, axial
C_{0a}	207.000 N	Basic static load rating, axial
C_{ua}	9.500 N	Fatigue load limit, axial
n_G	3.200 1/min	Limiting speed
n_{gr}	6.000 1/min	Reference speed
$\approx m$	1,346 kg	Weight

Mounting dimensions

$d_{a \min}$	85 mm	Minimum diameter shaft shoulder
$D_{a \max}$	80 mm	Maximum diameter of housing shoulder
$r_{a \max}$	1 mm	Maximum filled radius

Dimensions

r_{\min}	1,1 mm	Minimum chamfer dimension
D_1	57 mm	Inner diameter housing washer
d_1	105 mm	Outer diameter shaft washer
R	80 mm	Radius spherical housing washer
A	30 mm	Distance of the center point
T_1	42 mm	Height with seat washer

Temperature range

T_{\min}	-30 °C	Operating temperature min.
T_{\max}	150 °C	Operating temperature max.

Calculation factors

A	0,26	Minimum load factor
---	------	---------------------



View product details on medias

19.04.2024, 17:01:59 CEST

SCHAEFFLER

Additional information

U311

Seat washer

