**FAG****53310**

Axial deep groove ball bearing

Axial deep groove ball bearing 533, single direction, with spherical housing washer, steel sheet metal cage

Technical information

Main Dimensions & Performance Data

d	50 mm	Inner diameter shaft washer
D	95 mm	Outer diameter housing washer
T	34,3 mm	Height
C_a	82.000 N	Basic dynamic load rating, axial
C_{0a}	169.000 N	Basic static load rating, axial
C_{ua}	7.700 N	Fatigue load limit, axial
n_G	3.550 1/min	Limiting speed
n_{gr}	6.400 1/min	Reference speed
$\approx m$	0,969 kg	Weight

Mounting dimensions

$d_{a \min}$	77 mm	Minimum diameter shaft shoulder
$D_{a \max}$	72 mm	Maximum diameter of housing shoulder
$r_{a \max}$	1 mm	Maximum filled radius

Dimensions

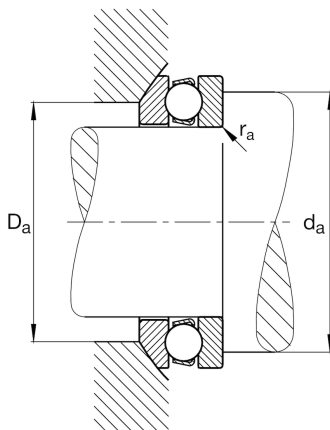
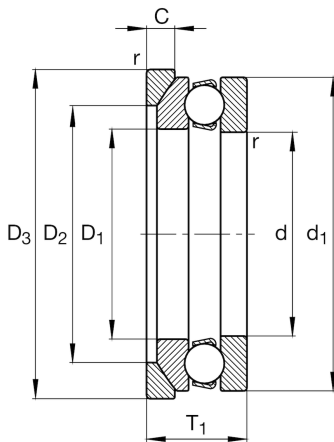
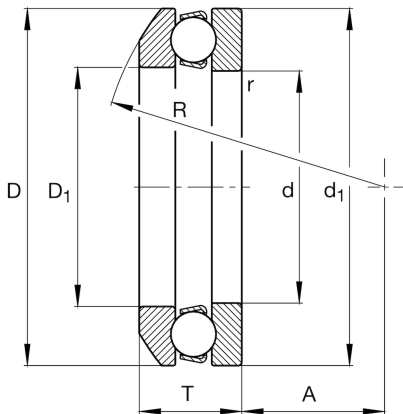
r_{\min}	1,1 mm	Minimum chamfer dimension
D_1	52 mm	Inner diameter housing washer
d_1	95 mm	Outer diameter shaft washer
R	72 mm	Radius spherical housing washer
A	28 mm	Distance of the center point
T_1	37 mm	Height with seat washer

Temperature range

T_{\min}	-30 °C	Operating temperature min.
T_{\max}	150 °C	Operating temperature max.

Calculation factors

A	0,18	Minimum load factor
---	------	---------------------





View product details on medias

19.04.2024, 17:01:00 CEST

SCHAEFFLER

Additional information

U310

Seat washer

