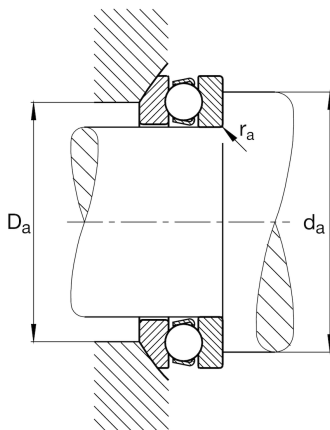
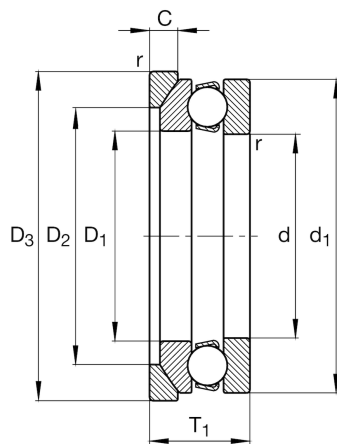
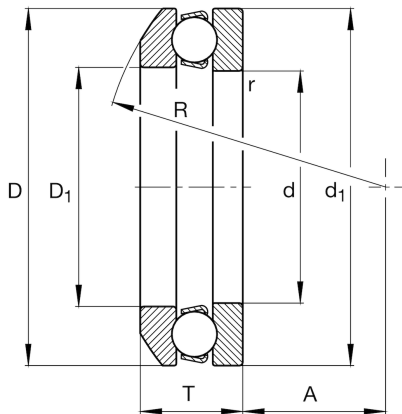
**FAG****53307**

Axial deep groove ball bearing

Axial deep groove ball bearing 533, single direction, with spherical housing washer, steel sheet metal cage

Technical information

Main Dimensions & Performance Data



d	35 mm	Inner diameter shaft washer
D	68 mm	Outer diameter housing washer
T	25,6 mm	Height
C _a	50.000 N	Basic dynamic load rating, axial
C _{0a}	89.000 N	Basic static load rating, axial
C _{ua}	4.050 N	Fatigue load limit, axial
n _G	4.850 1/min	Limiting speed
n _{gr}	8.200 1/min	Reference speed
≈m	0,376 kg	Weight

Mounting dimensions

d _{a min}	55 mm	Minimum diameter shaft shoulder
D _{a max}	52 mm	Maximum diameter of housing shoulder
r _{a max}	1 mm	Maximum filled radius

Dimensions

r _{min}	1 mm	Minimum chamfer dimension
D ₁	37 mm	Inner diameter housing washer
d ₁	68 mm	Outer diameter shaft washer
R	56 mm	Radius spherical housing washer
A	24 mm	Distance of the center point
T ₁	28 mm	Height with seat washer

Temperature range

T _{min}	-30 °C	Operating temperature min.
T _{max}	150 °C	Operating temperature max.

Calculation factors

A	0,05	Minimum load factor
---	------	---------------------



View product details on medias

15.04.2024, 11:03:38 CEST

SCHAEFFLER

Additional information

U307

Seat washer

