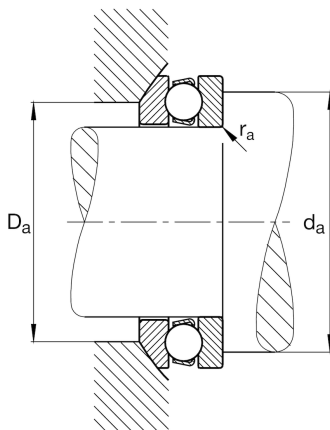
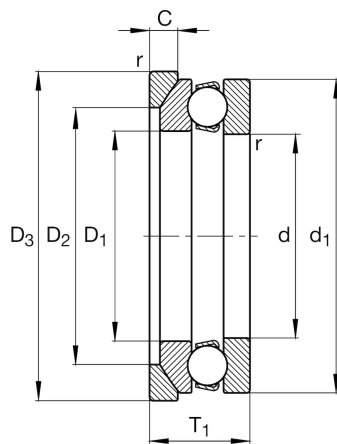
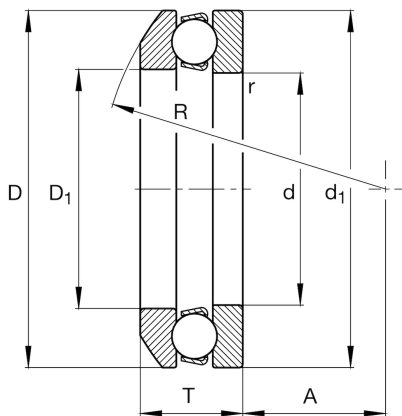
**FAG****53224**

Axial deep groove ball bearing

Axial deep groove ball bearing 532, single direction, with spherical housing washer, steel sheet metal cage

Technical information

Main Dimensions & Performance Data



d	120 mm	Inner diameter shaft washer
D	170 mm	Outer diameter housing washer
T	40,8 mm	Height
C_a	128.000 N	Basic dynamic load rating, axial
C_{0a}	385.000 N	Basic static load rating, axial
C_{ua}	14.600 N	Fatigue load limit, axial
n_G	2.550 1/min	Limiting speed
n_{gr}	3.000 1/min	Reference speed
$\approx m$	2,577 kg	Weight

Mounting dimensions

$d_{a \min}$	150 mm	Minimum diameter shaft shoulder
$D_{a \max}$	145 mm	Maximum diameter of housing shoulder
$r_{a \max}$	1 mm	Maximum filled radius

Dimensions

r_{\min}	1,1 mm	Minimum chamfer dimension
D_1	123 mm	Inner diameter housing washer
d_1	170 mm	Outer diameter shaft washer
R	125 mm	Radius spherical housing washer
A	61 mm	Distance of the center point
T_1	46 mm	Height with seat washer

Temperature range

T_{\min}	-30 °C	Operating temperature min.
T_{\max}	150 °C	Operating temperature max.

Calculation factors

A	0,94	Minimum load factor
---	------	---------------------



View product details on medias

12.04.2024, 17:04:02 CEST

SCHAEFFLER

Additional information

U224

Seat washer

