**FAG****53211**

Axial deep groove ball bearing

Axial deep groove ball bearing 532, single direction, with spherical housing washer, steel sheet metal cage

Technical information

Main Dimensions & Performance Data

d	55 mm	Inner diameter shaft washer
D	90 mm	Outer diameter housing washer
T	27,3 mm	Height
C _a	58.000 N	Basic dynamic load rating, axial
C _{0a}	133.000 N	Basic static load rating, axial
C _{ua}	6.000 N	Fatigue load limit, axial
n _G	4.350 1/min	Limiting speed
n _{gr}	5.700 1/min	Reference speed
≈m	0,589 kg	Weight

Mounting dimensions

d _{a min}	76 mm	Minimum diameter shaft shoulder
D _{a max}	72 mm	Maximum diameter of housing shoulder
r _{a max}	1 mm	Maximum filled radius

Dimensions

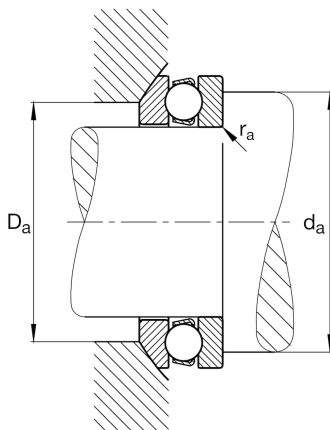
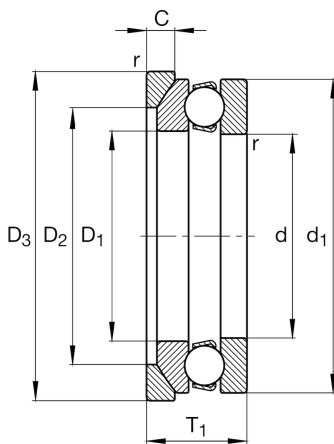
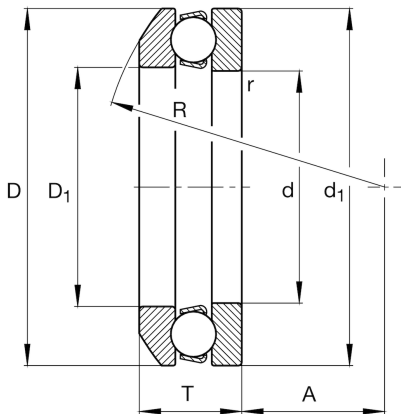
r _{min}	1 mm	Minimum chamfer dimension
D ₁	57 mm	Inner diameter housing washer
d ₁	90 mm	Outer diameter shaft washer
R	72 mm	Radius spherical housing washer
A	35 mm	Distance of the center point
T ₁	30 mm	Height with seat washer

Temperature range

T _{min}	-30 °C	Operating temperature min.
T _{max}	150 °C	Operating temperature max.

Calculation factors

A	0,11	Minimum load factor
---	------	---------------------





View product details on medias

12.04.2024, 16:17:01 CEST

SCHAEFFLER

Additional information

U211

Seat washer

