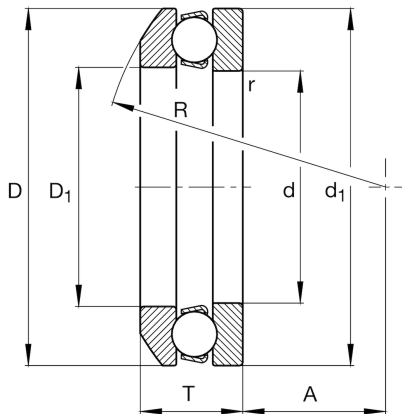
**FAG****53209**

Axial deep groove ball bearing

Axial deep groove ball bearing 532, single direction, with spherical housing washer, steel sheet metal cage

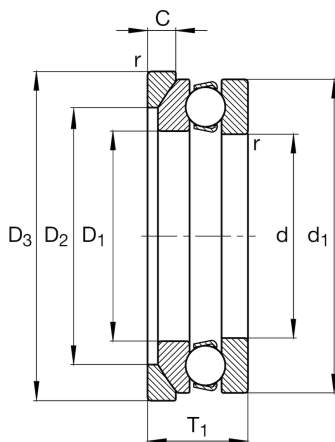
Technical information

Main Dimensions & Performance Data



d	45 mm	Inner diameter shaft washer
D	73 mm	Outer diameter housing washer
T	21,3 mm	Height
C _a	39.000 N	Basic dynamic load rating, axial
C _{0a}	80.000 N	Basic static load rating, axial
C _{ua}	3.650 N	Fatigue load limit, axial
n _G	5.500 1/min	Limiting speed
n _{gr}	6.600 1/min	Reference speed
≈m	0,291 kg	Weight

Mounting dimensions



d _{a min}	62 mm	Minimum diameter shaft shoulder
D _{a max}	60 mm	Maximum diameter of housing shoulder
r _{a max}	1 mm	Maximum filled radius

Dimensions

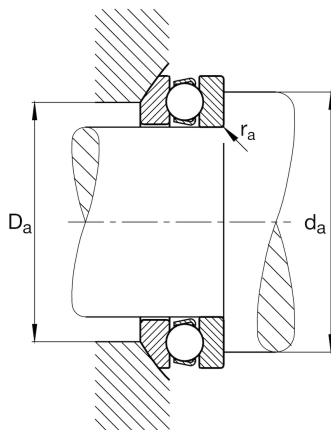
r _{min}	1 mm	Minimum chamfer dimension
D ₁	47 mm	Inner diameter housing washer
d ₁	73 mm	Outer diameter shaft washer
R	56 mm	Radius spherical housing washer
A	26 mm	Distance of the center point
T ₁	24 mm	Height with seat washer

Temperature range

T _{min}	-30 °C	Operating temperature min.
T _{max}	150 °C	Operating temperature max.

Calculation factors

A	0,043	Minimum load factor
---	-------	---------------------





View product details on medias

12.04.2024, 15:11:45 CEST

SCHAEFFLER

Additional information

U209

Seat washer

