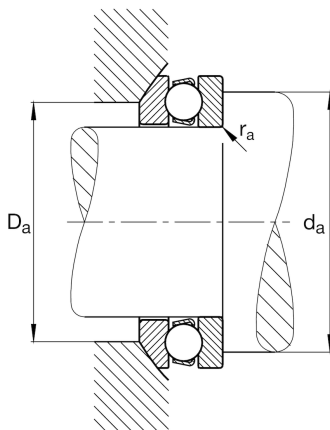
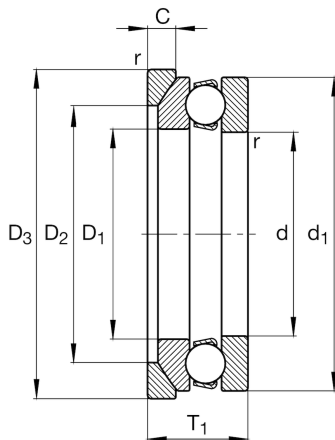
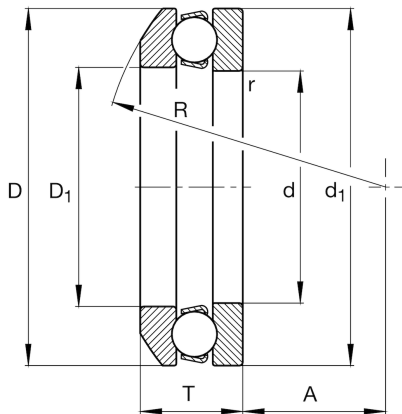
**FAG****53207**

Axial deep groove ball bearing

Axial deep groove ball bearing 532, single direction, with spherical housing washer, steel sheet metal cage

Technical information

Main Dimensions & Performance Data



d	35 mm	Inner diameter shaft washer
D	62 mm	Outer diameter housing washer
T	19,9 mm	Height
C_a	35.500 N	Basic dynamic load rating, axial
C_{0a}	67.000 N	Basic static load rating, axial
C_{ua}	3.100 N	Fatigue load limit, axial
n_G	6.000 1/min	Limiting speed
n_{gr}	8.000 1/min	Reference speed
$\approx m$	0,221 kg	Weight

Mounting dimensions

$d_{a \min}$	51 mm	Minimum diameter shaft shoulder
$D_{a \max}$	48 mm	Maximum diameter of housing shoulder
$r_{a \max}$	1 mm	Maximum filled radius

Dimensions

r_{\min}	1 mm	Minimum chamfer dimension
D_1	37 mm	Inner diameter housing washer
d_1	62 mm	Outer diameter shaft washer
R	50 mm	Radius spherical housing washer
A	24 mm	Distance of the center point
T_1	22 mm	Height with seat washer

Temperature range

T_{\min}	-30 °C	Operating temperature min.
T_{\max}	150 °C	Operating temperature max.

Calculation factors

A	0,028	Minimum load factor
---	-------	---------------------



View product details on medias

12.04.2024, 15:07:46 CEST

SCHAEFFLER

Additional information

U207

Seat washer

