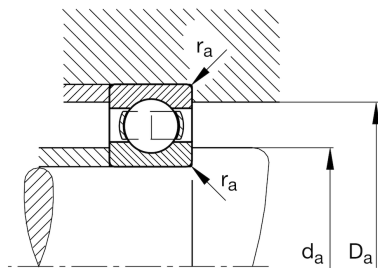
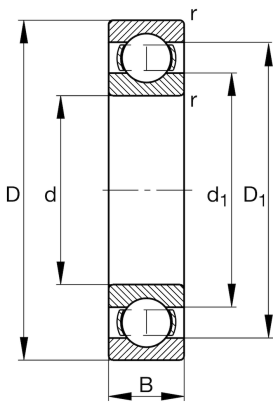
**FAG****16030-M-C3**

Deep groove ball bearing

Deep groove ball bearing 160..-M, single row, solid brass cage

## Technical information

**Main Dimensions & Performance Data**

d	150 mm	Bore diameter
D	225 mm	Outside diameter
B	24 mm	Width
$C_r$	98.000 N	Basic dynamic load rating, radial
$C_{0r}$	99.000 N	Basic static load rating, radial
$C_{ur}$	4.400 N	Fatigue load limit, radial
$n_G$	5.300 1/min	Limiting speed
$n_{gr}$	3.100 1/min	Reference speed
$\approx m$	3,54 kg	Weight

**Mounting dimensions**

$d_{a \min}$	156 mm	Minimum diameter shaft shoulder
$D_{a \max}$	219 mm	Maximum diameter of housing shoulder
$r_{a \max}$	1 mm	Maximum fillet radius

**Dimensions**

$r_{\min}$	1,1 mm	Minimum chamfer dimension
$D_1$	199,04 mm	Shoulder diameter outer ring
$d_1$	175,96 mm	Shoulder diameter inner ring

**Temperature range**

$T_{\min}$	-30 °C	Operating temperature min.
$T_{\max}$	150 °C	Operating temperature max.

**Calculation factors**

$f_0$	16,5	Calculation factor
-------	------	--------------------