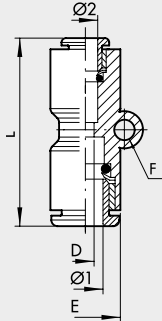




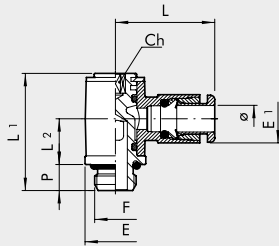
TECHNOPOLYMER PUSH-IN FITTINGS FOR mm TUBES AND G (BSP) or METRIC THREAD

STRAIGHT, INTERMEDIATE, TECHNOPOLYMER (R19)



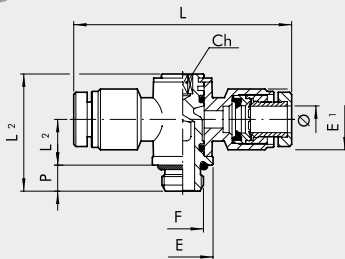
Code	Ref.	Ø1	Ø2	E	L	D	F
2019001	RL19	4	4	9.2	30.4	3	3.3
2019002	R19	5	5	14	33.5	4	-
2019003	RL19	6	6	11.3	33	5	3.3
2019004	RL19	8	8	13.8	36.2	6.5	3.3
2019005	RL19	10	10	16	38	8.5	3.3
2019006	RL19	12	12	19.5	40	10.5	3.3
2019303	RL19	6	4	11.3	32.7	3	3.3
2019304	RL19	8	6	13.8	36.1	5	3.3
2019305	RL19	10	8	16	37.8	6.5	3.3
2019306	RL19	12	10	19.5	40	8.5	3.3

MALE ROD, SINGLE ROTARY RING, TECHNOPOLYMER (R20)



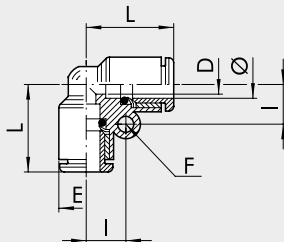
Code	Ref.	Ø	F	Ch	P	L	L1	L2	E	E1
2020001	RL20	4	M5	2	4	18.7	18.4	9.1	8	9.2
2020002	RL20	4	1/8	3	6	21	24.9	12.3	14	9.2
2020003	R20	5	M5	2	4	21.5	18.8	8.5	9.9	13.5
2020004	R20	5	1/8	3	6	23	27	10.5	14	13.5
2020016	RL20	6	M5	2	4	20.8	18.4	9.1	8	11.3
2020005	RL20	6	1/8	3	6	22.3	24.9	12.3	14	11.3
2020007	RL20	6	1/4	4	8	24.3	29.4	14.3	18	11.3
2020006	RL20	8	1/8	3	6	25.6	24.9	12.3	14	13.8
2020008	RL20	8	1/4	4	8	27.2	29.4	14.3	18	13.8
2020009	RL20	10	1/4	4	8	28.6	29.4	14.3	18	16
2L20017	RL20	10	3/8	5	9	30.5	35.6	15.3	22	16
2020010	RL20	12	1/4	4	8	31	29.4	14.3	18	19.5
2020011	RL20	12	3/8	5	9	32.4	35.6	17.5	22	19.5
2020012	RL20	12	1/2	8	11	34	40.8	19.2	26	19.5

MALE ROD, DUAL ROTARY RING, TECHNOPOLYMER (R20/A)



Code	Ref.	Ø	F	Ch	P	L	L1	L2	E	E1
2020A01	R20/A	4	M5	2	4	40	16.8	6.5	9.9	10.9
2020A02	R20/A	4	1/8	3	6	45	27	10.5	14	12.5
2020A03	R20/A	5	M5	2	4	43	18.8	8.5	9.9	13.5
2020A04	R20/A	5	1/8	3	6	46	27	10.5	14	13.5
2020A05	R20/A	6	1/8	3	6	45	27	10.5	14	15
2020A07	R20/A	6	1/4	4	8	48	31.5	11.5	18	15
2020A06	R20/A	8	1/8	3	6	51	27	10.5	14	16.3
2020A08	R20/A	8	1/4	4	8	54	31.5	11.5	18	16.3
2020A09	R20/A	10	1/4	4	8	64	31.5	11.5	18	18.5
2020A10	R20/A	12	1/4	4	8	64	31.5	11.5	18	21
2020A11	R20/A	12	3/8	5	9	68	36	13.5	22	21
2020A12	R20/A	12	1/2	8	11	72	42	16.2	26	21

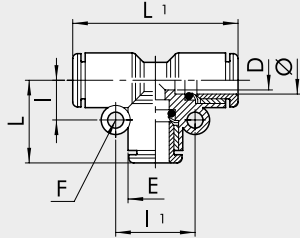
ELBOW, INTERMEDIATE, TECHNOPOLYMER (R21)



Code	Ref.	Ø	L	D	E	I	F
2L21001	RL21	4	16.7	2.5	9.2	7.2	3.3
2021002	R21	5	20	3.5	13.5	-	-
2L21003	RL21	6	19	4.2	11.3	8.2	3.3
2L21004	RL21	8	21.4	6.2	13.8	9.6	3.3
2021005	RL21	10	24	8.5	16	10.9	3.3
2021006	RL21	12	25.8	10.5	19.5	12.5	3.3

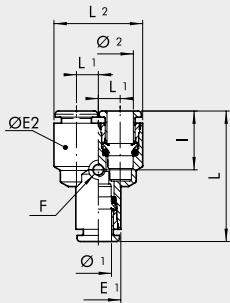


INTERMEDIATE TEE, TECHNOPOLYMER (R22)



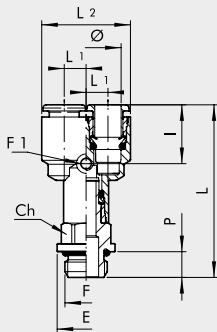
Code	Ref.	Ø	L	L1	D	E	I	I1	F
2122001	RL22	4	16.7	33.4	2.5	9.2	7.2	14.4	3.3
2022002	R22	5	20	40	3.5	13.5	-	-	-
2122003	RL22	6	19	38	4.2	11.3	8.2	16.4	3.3
2122004	RL22	8	21.4	42.8	6.2	13.8	9.6	19.2	3.3
2022005	RL22	10	24	48	8.5	16	10.9	21.8	3.3
2022006	RL22	12	25.8	51.6	10.5	19.5	12.5	25	3.3

WYE (R23)



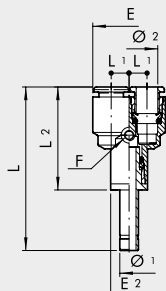
Code	Ref.	Ø1	Ø2	L	L1	E1	ØE2	I	F	L2
2023001	RL23	4	4	32.9	5	9.2	9.2	14.8	3.3	19.2
2023002	R23	5	5	35.5	6.5	13.5	13.5	-	-	26.5
2023003	RL23	6	6	35.5	5.8	11.3	11.3	15	3.3	22.8
2023004	RL23	8	8	39.5	7.2	13.8	13.8	15.8	3.3	28.2
2123005	RL23	10	10	43.1	8.3	16	16	17.4	3.3	32.6
2123006	RL23	12	12	48	10	19.5	19.5	18	3.3	39.5
2123301	RL23	6	4	34.2	5	11.3	9.2	14.8	3.3	19.2
2123303	RL23	8	6	37.8	5.8	13.8	11.3	15	3.3	22.8
2123306	RL23	10	8	40.4	7.2	16	13.8	15.8	3.3	28.2
2123309	RL23	12	10	44.2	8.3	19.5	16	17.4	3.3	32.6

Y TECHNOPOLYMER, THREADED INPUT (R23/M)



Code	Ref.	Ø	F	L	L1	L2	I	Ch	P	E	F1
2123401	RL23/M	4	M5	38.7	5	19.2	14.8	9	4	9.9	3.3
2123402	RL23/M	4	1/8	42.6	5	19.2	14.8	12	6	14	3.3
2123403	RL23/M	4	1/4	46.6	5	19.2	14.8	14	8	18	3.3
2123406	RL23/M	6	1/8	44.9	5.75	22.8	15	12	6	14	3.3
2123407	RL23/M	6	1/4	47.9	5.75	22.8	15	14	8	18	3.3
2123409	RL23/M	8	1/8	48.4	7.2	28.2	15.8	14	6	15	3.3
2123410	RL23/M	8	1/4	52.8	7.2	28.2	15.8	14	8	18	3.3
2123412	RL23/M	8	3/8	54.4	7.2	28.2	15.8	17	9	22	3.3
2123413	RL23/M	10	1/4	53.8	8.3	32.6	17.4	16	8	18	3.3
2123415	RL23/M	10	3/8	56	8.3	32.6	17.4	17	9	20	3.3
2123419	RL23/M	12	3/8	62	10	39.5	18	19	9	22	3.3
2123420	RL23/M	12	1/2	62.3	10	39.5	18	22	11	26	3.3

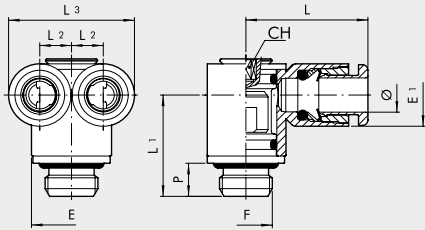
Y BRANCH WITH ADAPTER, TECHNOPOLYMER (R24)



Code	Ref.	Ø1	Ø2	L	L1	L2	E1	E2	I	F
2024001	RL24	4	4	46.9	5	29.7	9.2	9.2	14.8	3.3
2024003	RL24	6	6	49.7	5.75	32	11.3	11.3	15	3.3
2124004	RL24	8	8	55.1	7.2	35.9	13.8	13.8	15.8	3.3
2124005	RL24	10	10	63.1	8.3	39.2	16	16	17.4	3.3
2124006	RL24	12	12	70.5	10	44	19.5	19.5	18	3.3
2124301	RL24	6	4	48.4	5	30.7	9.2	11.3	14.8	3.3
2124303	RL24	8	6	53.4	5.75	34.2	11.3	13.8	15	3.3
2124306	RL24	10	8	60.4	7.2	36.6	13.8	16	15.8	3.3
2124309	RL24	12	10	66.7	8.3	40.2	16	19.5	17.4	3.3

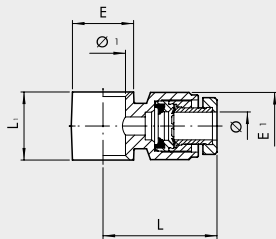


TECHNOPOLYMER PARALLEL Y, THREADED INPUT (R25)



Code	Ref.	Ø	F	L	L1	L2	L3	E	E1	CH	P
2L25001	RL25	4	M5	17.7	13.1	5	19.2	8	9.2	2	4
2L25002	RL25	4	M7	17.7	14.6	5	19.2	9.8	9.2	3	5
2L25003	RL25	4	1/8	17.7	16.5	5	19.2	13	9.2	3	6
2L25004	RL25	6	1/8	23	18.3	5.75	22.8	14	11.3	3	6
2L25005	RL25	6	1/4	23	21.2	5.75	22.8	16.4	11.3	4	8
2L25008	RL25	8	1/4	25.8	22.2	7.2	28.2	18	13.8	4	8
2L25009	RL25	8	3/8	25.8	23.8	7.2	28.2	20	13.8	5	9

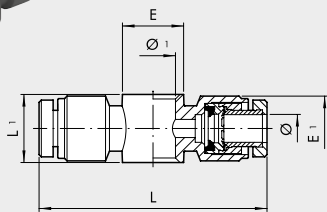
SINGLE RING, TECHNOPOLYMER (R28)



Code	Ref.	Ø	Ø 1	L	L1	E	E1
2012102	R28	4	1/8	22.5	17	15	12.5
2012104	R28	5	1/8	23	17	15	13.5
2012106	R28	6	1/8	22.5	17	15	15
2012107	R28	6	1/4	24	19	18	15
2012108	R28	8	1/8	25.5	17	15	16.5
2012109	R28	8	1/4	27	19	18	16.5
2012110	R28	8	3/8	29	22	21.5	16.5
2012111	R28	10	1/4	32	19	18	18.5
2012112	R28	10	3/8	32	22	21.5	18.5
2012113	R28	12	1/4	32	19	18	21
2012114	R28	12	3/8	34	22	21.5	21
2012115	R28	12	1/2	36	24	26	21

For the rods series D, see page D2.15

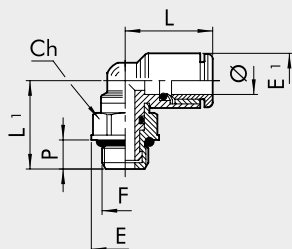
DUAL RING, TECHNOPOLYMER (R29)



Code	Ref.	Ø	Ø 1	L	L1	E	E1
2013102	R29	4	1/8	45	17	15	12.5
2013104	R29	5	1/8	46	17	15	13.5
2013106	R29	6	1/8	45	17	15	15
2013107	R29	6	1/4	48	19	18	15
2013108	R29	8	1/8	51	17	15	16.5
2013109	R29	8	1/4	54	19	18	16.5
2013110	R29	8	3/8	58	22	21.5	16.5
2013111	R29	10	1/4	64	19	18	18.5
2013112	R29	10	3/8	64	22	21.5	18.5
2013113	R29	12	1/4	64	19	18	21
2013114	R29	12	3/8	68	22	21.5	21
2013115	R29	12	1/2	72	24	26	21

For the rods series D, see page D2.15

ROTARY ELBOW, MALE, TECHNOPOLYMER (R34)



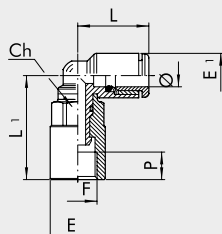
Code	Ref.	Ø	F	Ch	P	L	L1	E	E1
2L34001	RL34	4	M5	8	4	16.4	15.2	9	9.2
2L34020	RL34	4	M7	8	5	16.4	16.2	9.8	9.2
2L34002	RL34	4	1/8	12	6	16.4	17.2	14	9.2
2L34003	RL34	4	1/4	14	8	16.4	20.1	18	9.2
2L34006	RL34	6	M5	8	4	18	16.3	9	11.3
2L34021	RL34	6	M7	9	5	19	17.5	9.9	11.3
2L34007	RL34	6	1/8	12	6	19	18.3	14	11.3
2L34008	RL34	6	1/4	14	8	19	21.2	18	11.3
2L34009	RL34	8	1/8	12	6	20.2	19.5	14	13.8
2L34010	RL34	8	1/4	14	8	20.2	22.4	18	13.8
2L34011	RL34	8	3/8	17	9	20.2	24.4	22	13.8
2L34013	RL34	10	1/4	14	8	23.3	23.5	18	16
2L34014	RL34	10	3/8	17	9	23.3	25.6	22	16
2L34016	RL34	12	3/8	17	9	25.2	27.3	22	19.5
2L34017	RL34	12	1/2	19	11	25.2	30.3	26	19.5

TECHNOPOLYMER PUSH-IN FITTINGS FOR mm TUBES AND G (BSP) or METRIC THREAD

FITTINGS

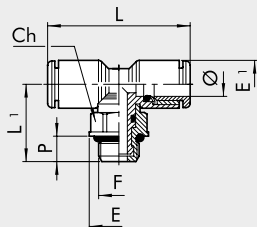


ELBOW, FEMALE, ROTARY, TECHNOPOLYMER (R34/F)



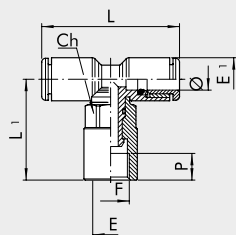
Code	Ref.	Ø	F	Ch	E	E1	L	L1	P
2L34F01	RL34/F 4	M5	8	9	9.2	16.4	15.3	4	
2L34F05	RL34/F 4	1/8	12	14	9.2	16.4	20.9	7	
2L34F06	RL34/F 6	M5	8	9	11.3	18	16.4	4	
2L34F07	RL34/F 6	1/8	12	14	11.3	19	26.5	7	
2L34F08	RL34/F 6	1/4	14	17	11.3	19	28.2	8	
2L34F09	RL34/F 8	1/8	12	14	13.8	20.2	27.7	7	
2L34F10	RL34/F 8	1/4	14	17	13.8	20.2	29.4	8	
2L34F13	RL34/F 10	1/4	14	17	16	23.3	33	8	
2L34F14	RL34/F 10	3/8	17	21	16	23.3	38	10	
2L34F16	RL34/F 12	3/8	17	21	19.5	25.2	40.3	10	
2L34F17	RL34/F 12	1/2	19	23.8	19.5	25.2	42.8	11	

CENTRAL TEE, MALE, TECHNOPOLYMER (R35)



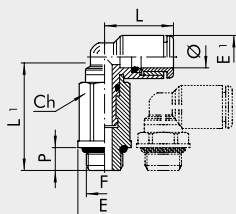
Code	Ref.	Ø	F	Ch	P	L	L1	E	E1
2L35001	RL35 4	M5	8	4	32.8	15.2	9	9.2	
2L35020	RL35 4	M7	8	5	32.8	16.2	9.8	9.2	
2L35002	RL35 4	1/8	12	6	32.8	17.2	14	9.2	
2L35003	RL35 4	1/4	14	8	32.8	20.1	18	9.2	
2L35006	RL35 6	M5	8	4	36	16.3	9	11.3	
2L35007	RL35 6	1/8	12	6	38	18.3	14	11.3	
2L35008	RL35 6	1/4	14	8	38	21.2	18	11.3	
2L35009	RL35 8	1/8	12	6	40.4	19.5	14	13.8	
2L35010	RL35 8	1/4	14	8	40.4	22.4	18	13.8	
2L35011	RL35 8	3/8	17	9	40.4	24.4	22	13.8	
2L35013	RL35 10	1/4	14	8	46.6	23.5	18	16	
2L35014	RL35 10	3/8	17	9	46.6	25.6	22	16	
2L35016	RL35 12	3/8	17	9	50.4	27.3	22	19.5	
2L35017	RL35 12	1/2	19	11	50.4	30.3	26	19.5	

CENTRAL TEE, FEMALE, ROTARY, TECHNOPOLYMER (R35/F)



Code	Ref.	Ø	F	Ch	E	E1	L	L1	P
2L35F01	RL35/F 4	M5	8	9	9.2	32.8	15.3	4	
2L35F06	RL35/F 6	M5	8	9	11.3	36	16.4	4	
2L35F07	RL35/F 6	1/8	12	14	11.3	38	26.5	7	
2L35F08	RL35/F 6	1/4	14	17	11.3	38	28.2	8	
2L35F09	RL35/F 8	1/8	12	14	13.8	40.4	27.7	7	
2L35F10	RL35/F 8	1/4	14	17	13.8	40.4	29.4	8	
2L35F13	RL35/F 10	1/4	14	17	16	46.6	33	8	
2L35F14	RL35/F 10	3/8	17	21	16	46.6	38	10	
2L35F16	RL35/F 12	3/8	17	21	19.5	50.4	40.3	10	
2L35F17	RL35/F 12	1/2	19	23.8	19.5	50.4	42.8	11	

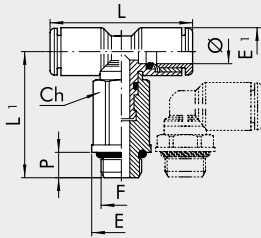
ROTARY ELBOW, MALE, EXTENDED, TECHNOPOLYMER (R36)



Code	Ref.	Ø	F	Ch	P	L	L1	E	E1
2L36001	RL36 4	M5	8	4	16.4	26.7	9	9.2	
2L36020	RL36 4	M7	8	5	16.4	27.7	9.8	9.2	
2L36002	RL36 4	1/8	12	6	16.4	25.3	14	9.2	
2L36006	RL36 6	M5	8	4	18	27.8	9	11.3	
2L36021	RL36 6	M7	9	5	18	29.3	9.9	11.3	
2L36007	RL36 6	1/8	12	6	19	30.9	14	11.3	
2L36008	RL36 6	1/4	14	8	19	33.2	18	11.3	
2L36009	RL36 8	1/8	12	6	20.2	32.1	14	13.8	
2L36010	RL36 8	1/4	14	8	20.2	34.4	18	13.8	
2L36012	RL36 10	1/4	14	8	23.3	38	18	16	

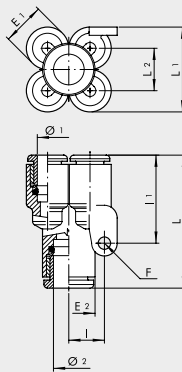


CENTRAL TEE, MALE, ROTARY, EXTENDED, TECHNOPOLYMER (R37)



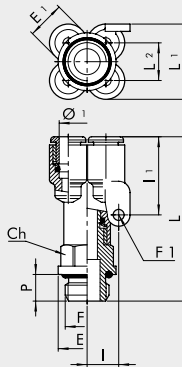
Code	Ref.	Ø	F	Ch	P	L	L1	E	E1
2L37001	RL37	4	M5	8	4	32.8	26.7	9	9.2
2L37020	RL37	4	M7	8	5	32.8	27.5	9.8	9.2
2L37002	RL37	4	1/8	12	6	32.8	25.3	14	9.2
2L37006	RL37	6	M5	8	4	36	27.8	9	11.3
2L37007	RL37	6	1/8	12	6	38	30.9	14	11.3
2L37008	RL37	6	1/4	14	8	38	33.2	18	11.3
2L37009	RL37	8	1/8	12	6	40.4	32.1	14	13.8
2L37010	RL37	8	1/4	14	8	40.4	34.4	18	13.8
2L37012	RL37	10	1/4	14	8	46.6	38	18	16

DUAL Y BRANCH TECHNOPOLYMER (R42)



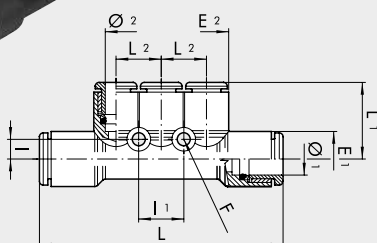
Code	Ref.	Ø1	Ø2	E1	E2	L	L1	L2	I	I1	F
2L42001	RL42	4	4	9.2	9.2	28.8	17.9	8.7	8	21.3	3.3
2L42002	RL42	4	6	9.2	11.3	31.3	17.9	8.7	8	21.3	3.3
2L42004	RL42	6	6	11.3	11.3	33.4	22.6	11.3	9.5	25.6	3.3
2L42005	RL42	6	8	11.3	14	34.8	22.6	11.3	9.5	25.6	3.3

DUAL Y BRANCH TECHNOPOLYMER, THREADED INPUT (R43)



Code	Ref.	Ø1	F	E1	E	Ch	P	L	L1	L2	I	I1	F1
2L43001	RL43	4	M5	9.2	8	9	4	35.5	17.9	8.7	8	21.3	3.3
2L43002	RL43	4	1/8	9.2	14	12	6	41.6	17.9	8.7	8	21.3	3.3
2L43003	RL43	4	1/4	9.2	18	14	8	44.6	17.9	8.7	8	21.3	3.3
2L43008	RL43	6	1/8	11.3	14	12	6	43.7	22.6	11.3	9.5	25.6	3.3
2L43009	RL43	6	1/4	11.3	18	14	8	46.7	22.6	11.3	9.5	25.6	3.3

MULTIPLE MANIFOLD, TECHNOPOLYMER (R44)



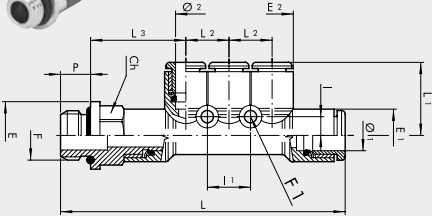
Code	Ref.	Ø1	Ø2	E1	E2	L	L1	L2	I	I1	F
2L44001	RL44	6	4	11.3	9.2	53.2	17.2	9.4	4.3	9.4	3.3
2L44003	RL44	8	6	14	11.3	61.4	19.6	11.5	5	11.5	3.3

TECHNOPOLYMER PUSH-IN FITTINGS FOR mm TUBES AND G (BSP) or METRIC THREAD

FITTINGS

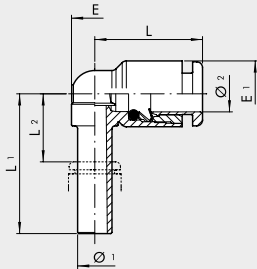


MULTIPLE MANIFOLD, INPUT, THREADED, TECHNOPOLYMER (R45)



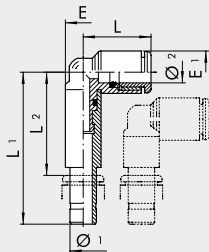
Code	Ref.	F	Ø1	Ø2	E1	E2	E	Ch	P	L	L1	L2	L3	I	I1	F1
2L45001	RL45	1/8	6	4	11.3	9.2	14	12	6	63.5	17.2	9.4	21.5	4.3	9.4	3.3
2L45002	RL45	1/4	6	4	11.3	9.2	18	14	8	66.5	17.2	9.4	22.5	4.3	9.4	3.3
2L45007	RL45	1/8	8	6	14	11.3	15	14	6	71.2	19.6	11.5	23	5	11.5	3.3
2L45008	RL45	1/4	8	6	14	11.3	18	14	8	75.6	19.6	11.5	25.4	5	11.5	3.3
2L45009	RL45	3/8	8	6	14	11.3	22	17	9	77.2	19.6	11.5	26	5	11.5	3.3

PLUG-IN ELBOWS (R46)



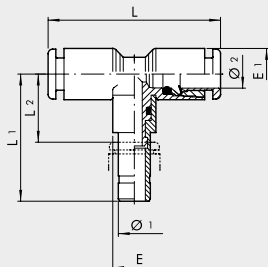
Code	Ref.	Ø1	Ø2	L	L1	L2	E	E1
2L46001	RL46	4	4	16	22.5	8.1	6.8	9.2
2L46002	RL46	6	6	18.5	24	8.4	8	11.3
2L46003	RL46	8	8	21.2	28.5	11.3	10	13.8
2L46004	RL46	10	10	23.3	32	13.3	12.5	16

EXTENDED PLUG-IN ELBOWS (R47)



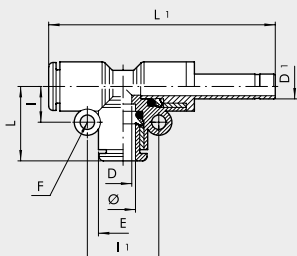
Code	Ref.	Ø1	Ø2	L	L1	L2	E	E1
2L47001	RL47	4	4	15.5	36.9	23.4	7.7	9.2
2L47002	RL47	6	6	18.1	40.6	25.9	9.3	11.3
2L47003	RL47	8	8	19.3	44.9	28.8	9.7	13.8

DOUBLE ELBOW (R48)



Code	Ref.	Ø1	Ø2	L	L1	L2	E	E1
2L48001	RL48	4	4	32	22.5	8.1	6.8	9.2
2L48002	RL48	6	6	37	37.5	16.4	9.7	11.3
2L48003	RL48	8	8	42.4	28.5	11.3	10	13.8
2L48004	RL48	10	10	46.6	46	27.7	14	16

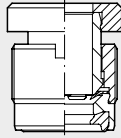
DOUBLE LATERAL ELBOW (R49)



Code	Ref.	Ø	L	L1	I	I1	E	D	D1	F
2L49001	RL49	4	16.7	47.4	7.2	14.4	9.2	2.5	4	3.3
2L49003	RL49	6	19	52.5	8.2	16.4	11.3	4.2	6	3.3
2L49004	RL49	8	21.4	58.4	9.6	19.2	13.8	6.2	8	3.3
2L49005	RL49	10	24.1	68.2	10.9	21.8	16	8.5	10	3.3
2L49006	RL49	12	25.8	74.1	12.5	25	19.5	10.5	12	3.3

CARTRIDGES AND ACCESSORIES

BRASS CARTRIDGE WITH THREAD (R26)

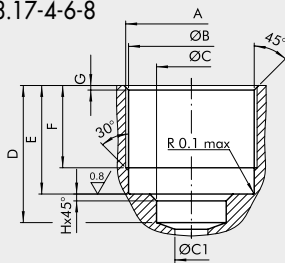


Code	Ref.	Ø	Brace of serration on centers in plastic material [Nm]	Brace of serration on metallic centers [Nm]
SERIES R				
2026A02	R26	3	0.6	0.8
2026A01	R26	3.17 ▲	0.6	0.8
2026001	R26	4 ▲	0.8	1
2026002	R26	5	0.8	1.5
2026003	R26	6	0.8	1.2
2026004	R26	8 ▲	1	1.8
2026005	R26	10	0.8	2
2026006	R26	12	0.8	2

▲ Ø3.17 = Ø1/8"; Ø4 = Ø5/32"; Ø8 = Ø5/16"

CARTRIDGE SLOT R26

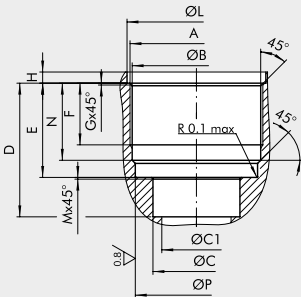
Ø 3-3.17-4-6-8



Ø	A	ØB	ØC	ØC1	D	E	F
3-3.17	M7x0.75	6.5 ±0.1	4.5 ^{+0.12} / ₀	4 max	10.5 ^{+0.3} / ₀	9.5 ^{+0.1} / _{-0.3}	7 ±0.20
4	M9.5x0.75	9 ^{+0.10} / ₀	4.1 ^{-0.10} / ₀	3 max	12 ⁺⁰ / _{-0.20}	9.5 ^{+0.15} / _{-0.05}	7.5 ±0.20
6	M11.5x0.75	11 ^{+0.10} / ₀	6.1 ^{+0.10} / ₀	5 max	12 ±0.1	9.5 ±0.1	7.5 ±0.20
8	M13.5x0.75	13 ^{+0.10} / ₀	8.1 ^{+0.10} / ₀	7 max	15 ⁺⁰ / _{-0.20}	10.5 ^{+0.15} / _{-0.05}	8.5 ±0.20

Ø	G	H
3-3.17	0.5	-
4	0.4	0.6
6	0.4	0.6
8	0.4	0.6

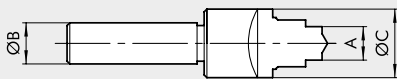
Ø 5-10-12



Ø	A	ØB	ØC	ØC1	D	E	F
5	M10.5x0.75	10 ^{+0.1} / ₀	5 ^{+0.15} / ₀	4 max	11.8 ±0.1	8.9 ^{+0.1} / ₀	5.8 ^{+0.3} / ₀
10	M15.5x0.75	15 ^{+0.1} / ₀	10 ^{+0.15} / ₀	9 max	15.6 ±0.1	11 ±0.05	7.5 ^{+0.3} / ₀
12	M18x1	17.5 ^{+0.05} / _{0.1}	12 ^{+0.05} / _{+0.15}	11 max	18 ±0.1	12 ±0.05	6.8 ^{+0.3} / ₀

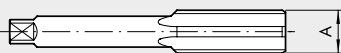
Ø	G	H	ØL	M	N	ØP
5	0.3	0.9 ⁺⁰ / _{-0.3}	11.2 ^{+0.12} / _{+0.02}	0.1	7.8 ±0.05	9.7 ±0.05
10	0.3	1.3 ⁺⁰ / _{-0.3}	16.2 ^{+0.1} / _{-0.05}	0.2	9 ±0.05	14.9 ^{+0.10} / ₀
12	0.6	1.3 ⁺⁰ / _{-0.3}	18.8 ^{+0.1} / ₀	0.2	9.75 ^{+0.1} / _{-0.15}	17 ^{+0.1} / ₀

TOOL FOR SLOT R26



Code	Ref.	A	ØB	ØC
2025010	UT.SE. R26 3-3.17	4.5	10	10
2025011	UT.SE. R26 4	4.1	12	18
2025012	UT.SE. R26 5	5.1	15	20
2025013	UT.SE. R26 6	6.1	16	19
2025014	UT.SE. R26 8	8.1	16	21
2025015	UT.SE. R26 10	10.1	16	25
2025016	UT.SE. R26 12	12.1	15	28

MALE FOR CARTRIDGE SLOT R26



Code	Ref.	Ø	A
2025020	MA R26 3-3.17	3-3.17	M7x0.75
2025021	MA R26 4	4	M9.5x0.75
2025022	MA R26 5	5	M10.5x0.75
2025023	MA R26 6	6	M11.5x0.75
2025024	MA R26 8	8	M13.5x0.75
2025025	MA R26 10	10	M15.5x0.75
2025026	MA R26 12	12	M18x1